

SOUTH CONGRESS INDUSTRIAL CENTER

A PLAT OF A PORTION OF SECTION 1, TOWNSHIP 47 SOUTH, RANGE 42 EAST

JOHN A. GRANT, JR., INC. CONSULTING ENGINEERS AND LAND SURVEYORS BOCA RATON, FLORIDA

APRIL 1977

Sheet 2 of 2

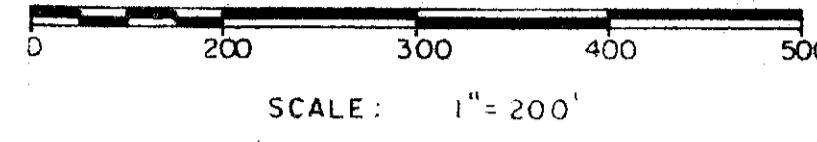
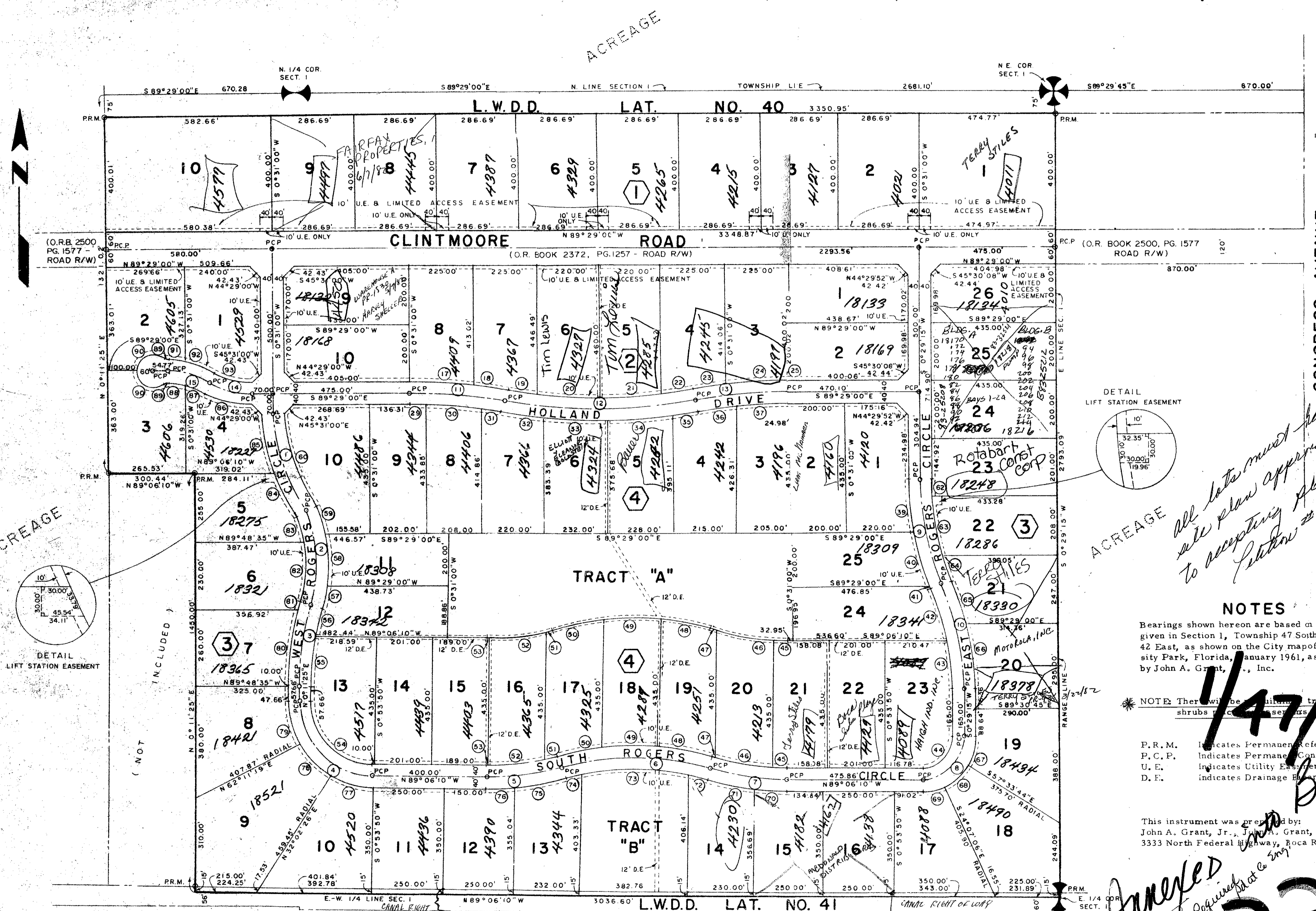


TABLE OF ARCS

ARC NO.	DELTA	RADIUS	CHORD	ARC LENGTH	TANGENT
1.	33°20'39"	477.47	273.96	277.87	142.99
2.	50°24'59"	477.47	406.71	420.14	224.76
3.	17°23'55"	954.93	288.86	289.98	146.11
4.	89°17'35"	260.00	365.42	405.20	256.81
5.	16°06'37"	954.93	267.62	268.50	135.14
6.	32°13'14"	954.93	529.96	537.01	275.81
7.	16°06'37"	954.93	267.62	268.50	135.14
8.	90°24'35"	150.00	212.89	236.69	131.08
9.	22°28'12"	954.93	372.10	374.50	189.69
10.	22°28'12"	954.93	372.10	374.50	189.69
11.	10°10'07"	1909.86	338.51	338.95	169.12
12.	20°20'14"	1909.86	674.35	677.91	342.45
13.	10°10'07"	1909.86	338.51	338.95	169.12
14.	29°28'32"	297.55	477.55	537.01	275.81
15.	29°28'32"	297.55	477.55	537.01	275.81
17.	6°37'35"	1949.86	225.38	225.51	112.88
18.	3°32'32"	1949.86	120.53	120.55	60.29
19.	3°16'38"	1869.86	106.94	106.93	53.49
20.	6°45'28"	1869.86	220.41	220.54	110.40
21.	6°45'21"	1869.86	220.35	220.48	110.37
22.	3°32'47"	1869.86	115.72	115.74	57.89
23.	3°17'04"	1949.86	111.76	111.77	55.90
24.	6°37'41"	1949.86	225.44	225.56	112.91
25.	0°15'22"	1949.86	8.72	8.72	4.36
29.	2°00'48"	1869.86	65.70	65.71	32.86
30.	6°24'12"	1869.86	208.87	208.97	104.60
31.	1°45'07"	1869.86	57.17	57.18	28.59
32.	4°51'08"	1949.86	165.08	165.13	82.61
33.	6°49'30"	1949.86	232.13	232.26	116.27
34.	6°43'40"	1949.86	228.82	228.96	114.61
35.	1°55'56"	1949.86	65.75	65.76	32.88
36.	4°38'38"	1869.86	151.51	151.55	75.82
37.	5°31'29"	1869.86	180.23	180.30	90.22
39.	9°50'28"	994.93	170.68	170.89	85.66
40.	11°59'45"	994.93	208.31	208.31	104.53
41.	0°37'59"	994.93	10.99	10.99	5.50
42.	12°26'29"	994.93	198.28	198.28	99.73
43.	10°01'43"	994.93	159.94	160.11	80.28
44.	90°24'35"	110.00	156.12	173.57	110.79
45.	2°04'00"	994.93	32.93	32.93	16.47
46.	12°24'24"	994.93	203.71	203.71	101.86
47.	0°15'53"	994.93	10.10	10.10	5.05
48.	11°21'25"	994.93	194.00	194.00	97.00
49.	11°55'47"	994.93	201.11	201.11	100.56
50.	25°10'21"	994.93	338.51	338.51	169.26
51.	38°15'31"	994.93	674.35	674.35	337.18
52.	12°32'39"	994.93	205.56	205.56	102.78
53.	0°10'51"	994.93	12.10	12.10	6.05
54.	89°10'00"	220.00	309.15	309.15	154.58
55.	10°03'00"	994.93	160.52	160.52	80.26
56.	7°20'01"	994.93	131.11	131.11	65.56
57.	8°10'00"	994.93	154.70	154.70	77.35
58.	22°18'09"	517.47	200.16	201.43	100.72
59.	19°56'50"	517.47	179.25	180.15	90.01
60.	33°20'39"	477.47	251.01	254.59	131.00
62.	3°30'51"	994.93	56.11	56.12	28.07
63.	13°15'48"	994.93	211.32	211.80	106.37
64.	5°41'33"	994.93	90.86	90.90	45.49
65.	9°45'56"	994.93	169.37	169.58	84.99
66.	12°42'16"	994.93	220.16	220.61	110.76
67.	31°57'01"	190.00	304.58	305.95	152.98
68.	33°26'38"	190.00	309.34	310.90	154.95
69.	25°00'56"	190.00	282.30	282.95	141.48
70.	6°38'49"	994.93	115.36	115.42	57.78
71.	9°27'48"	994.93	164.14	164.33	82.16
72.	4°27'27"	994.93	71.16	71.18	35.61
73.	24°08'55"	994.93	382.77	385.62	192.81
74.	3°36'52"	994.93	57.71	57.77	28.87
75.	10°20'31"	994.93	179.34	179.59	90.04
76.	5°46'06"	994.93	100.12	100.17	50.13
77.	31°08'36"	300.00	361.07	363.07	181.54
78.	30°08'53"	300.00	356.04	357.85	178.91
79.	29°09'06"	300.00	351.01	352.62	176.31
80.	28°09'19"	300.00	345.98	347.44	173.72
81.	27°09'32"	300.00	340.95	342.23	171.13
82.	26°09'45"	300.00	335.92	337.04	168.54
83.	25°09'58"	300.00	330.89	331.87	165.95
84.	24°09'11"	300.00	325.86	326.71	163.36
85.	23°08'24"	300.00	320.83	321.55	160.77
86.	22°07'37"	300.00	315.80	316.43	158.18
87.	21°06'50"	300.00	310.77	311.28	155.59
88.	20°06'03"	300.00	305.74	306.39	153.00
89.	19°05'16"	300.00	300.71	301.16	150.41
90.	18°04'29"	300.00	295.68	295.95	147.82
91.	17°03'42"	300.00	290.65	290.77	145.23
92.	16°02'55"	300.00	285.62	285.59	142.64
93.	15°02'08"	300.00	280.59	280.41	140.05



all lots must have
site plan approval prior
to accepting plans
dated 2-76-30

NOTES
Bearings shown hereon are based on bearings given in Section 1, Township 47 South, Range 42 East, as shown on the City map of University Park, Florida, January 1961, as prepared by John A. Grant, Jr., Inc.

NOTE: There will be utility lines, or shrubs present in these areas.

P.R.M. Indicates Permanent Reference Monument
P.C.P. Indicates Permanent Control Point
U.E. Indicates Utility Easement
D.E. Indicates Drainage Easement

This instrument was prepared by:
John A. Grant, Jr., J. A. Grant, Jr., Inc.
3333 North Federal Highway, Boca Raton, Fla.

Amended
Turnout Required at 6:00 AM

33/46

